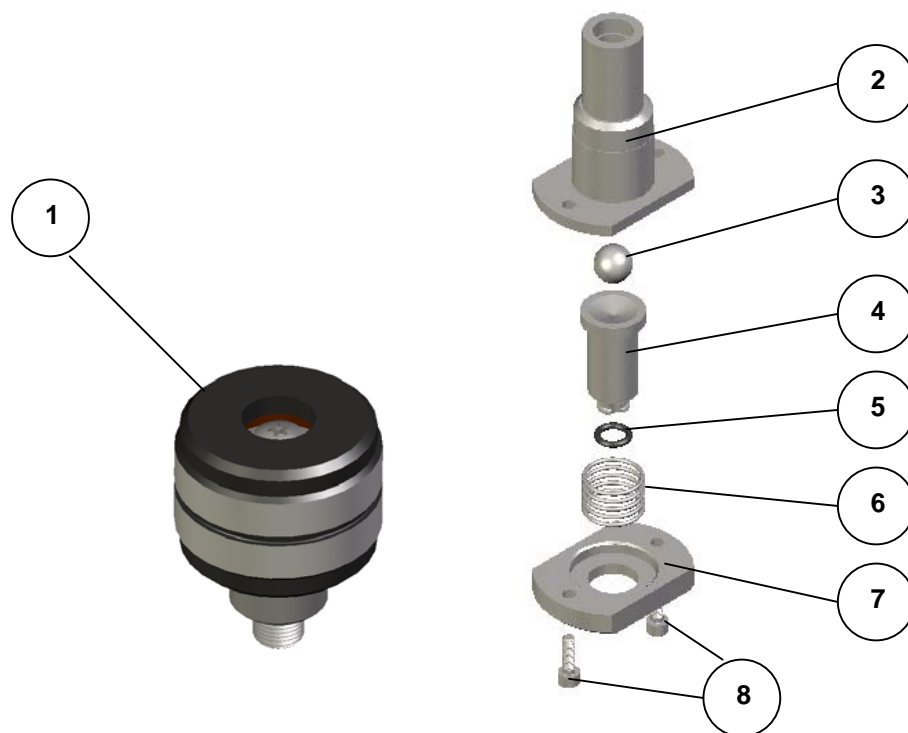




Mark II Golden Gate Torque Knob Screw Replacement Kit (P/N 550-262)

The parts supplied allow for fitting of a replacement Mark II Golden Gate Torque Knob Screw assembly into the bridge piece of the Golden Gate ATR accessory.

The torque screw knob (1) screws into its appropriate housing piece (2). Both of these parts have been supplied as new, but existing parts of the Golden Gate (see diagram) are used for correct re-assembly of the replacement parts.



The parts (3) through to (8) are retained from the original bridge pieces of the Golden Gate ATR accessory.

To change over the parts remove the original torque knob (1) by unscrewing completely out of the bridge. Then undo the screws (8) completely, so that the retaining plate (7), spring (6), clamp anvil holder (4) and O-ring (5), ball bearing (3) and torque knob housing (2) can be removed from the underside of the Golden Gate bridge.

For re-assembly place the new torque knob housing (2) in position and refit the original parts (3 to 8) in the reverse sequence to removal. The new Torque knob assembly (1) can then be screwed into its new housing (2).