

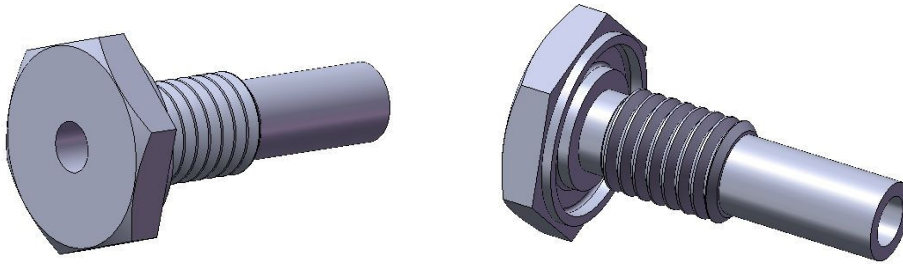


## Variable Temperature Cell Flow Fittings Kit P/N GS20080

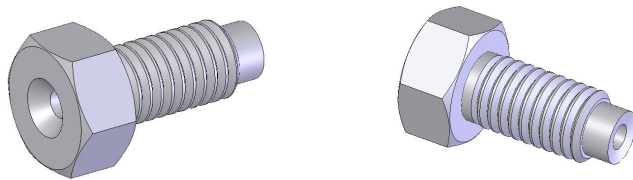
Included in this kit are the parts required to convert the Variable Temperature Cells P/N's GS21525 and GS21530 for use with liquid flow cells or flow cuvettes.

For fitting of the various parts please consult the instruction manual for the Variable Temperature Cell from 2I-21525-Issue 13 and above.

### Contents Of Kit Identification



Zero dead volume fitting (x2) (P/N 335-007)



Flow fitting screw nut (x4) (P/N 322-166)

O-ring for zero dead volume fitting (x2) (P/N 377-155)

Stainless steel blanking rod (50mm long) (x2) (P/N 369-053)

Olive and ferrule set for 1/16" O.D. tubing (x6) (P/N 385-036)

1/16" stainless steel tubing (130mm long) (x2) (P/N 329-282)

1/16" stainless steel tubing (40mm long) (x2) (P/N 329-283)

Length of PTFE tubing (x1) (P/N 153-053)

9/16" and 5/8" open ended spanner (x1) (P/N 820-070)

1/4" and 5/16" open ended spanner (x2) (P/N 820-007)