

Quick Start Guide For Quest ATR Accessory P/N GS10800 Series

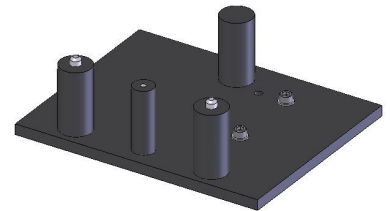
Specac



This Quick Start Guide is intended to help you through the steps required for the correct first time installation and alignment of the **Quest ATR Accessory** into your IR spectrometer system. This guide is a supplement to the Instruction Manual provided for the accessory itself where more detailed information can be found.

Step 1 – Install the Benchmark™ Baseplate into your spectrometer

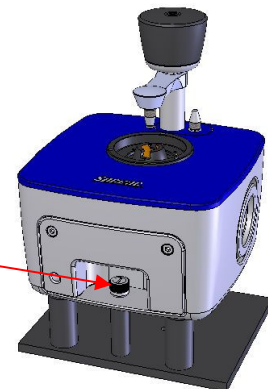
The Benchmark™ baseplate supplied allows the Quest ATR Accessory to be positioned correctly in the sample compartment of your specific spectrometer. Please consult the relevant page of the Benchmark™ Baseplate Installation Guide instruction manual (2I-549-000-7) if you need more information.



Step 2 – Fit the Quest ATR Accessory (Optical Unit) to the Baseplate

The Quest ATR Accessory can now be fitted onto the baseplate. The Optical Unit is placed over the baseplate support pillars and the central front Fixing Thumbscrew tightened into the central pillar.

Fixing
Thumbscrew

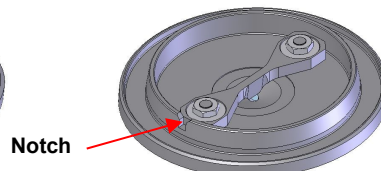


Step 3 – Fit the ATR Crystal Puck to the Optical Unit

The Quest ATR accessory is normally supplied with the ATR Crystal Puck already in place on the Optical Unit. Release the pressure tower and remove any packing material on the diamond.

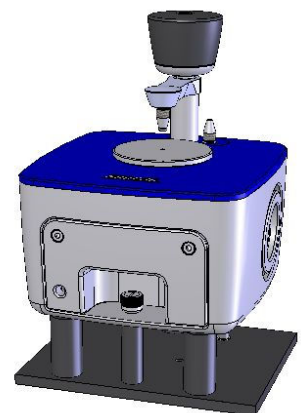


Top View of Crystal Puck



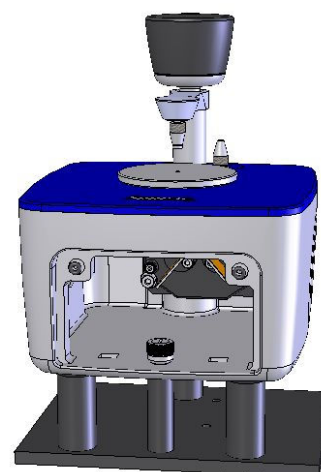
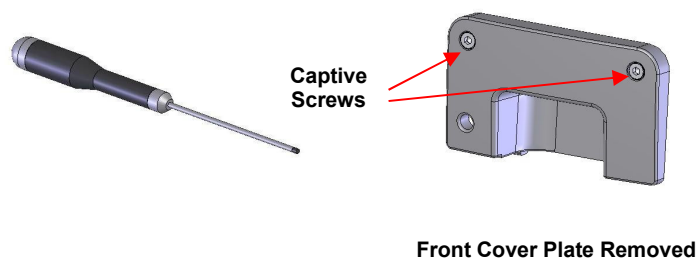
Underside View of Crystal Puck

If the puck has not already been fitted, then place it on the optical unit as shown. Take care that the **Notch** on the underside of the Crystal Puck locates with the small pin on the top and to the front of the Optical Unit. The Crystal Puck is held in position by three magnet catches around the top aperture of the Optical Unit.



Step 4 – Remove the Front Cover

Use the 3.0mm ball driver (supplied) to undo the two captive screws shown and pull the top of the cover forward to remove it.



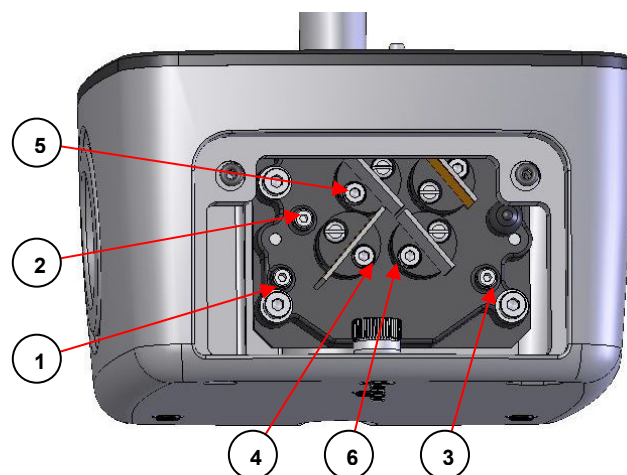
Step 5 – Alignment Procedure

With the spectrometer in its energy monitoring mode, use the 2.5mm ball driver (supplied) to adjust the alignment screws in the following sequence (the screws are identified in the diagram opposite). Rotate each screw in turn (one at a time) to obtain the maximum energy level.

Screw sequence 1, 2, 3, 4, 5, 6.

Do not adjust any other screws

If the energy has increased significantly after these adjustments, repeat them again in the same order. This will ensure that the accessory is in its optimum alignment. Remember, this alignment process only has to be done once when first setting up the accessory in the spectrometer – so it is worth spending a small amount of time now in order to get the best performance from it in the future.



Step 6 – Replace the Front Cover

Once aligned, the front cover can be replaced to maintain a stable environment inside the accessory. To fit the purge bellows or a dry air supply to purge the accessory, refer to page 18 of the Quest ATR Accessory instruction manual.

Step 7 – It's Ready to Use!

For safety information and detailed instructions on getting the best from your Quest ATR Accessory please refer to the Quest ATR Accessory instruction manual 2I-10800-6 supplied.

Specac Ltd
River House, 97 Cray Avenue,
Orpington
Kent BR5 4HE
Tel: +44 (0) 1689 873134
Fax: +44 (0) 1689 878527
www.specac.com