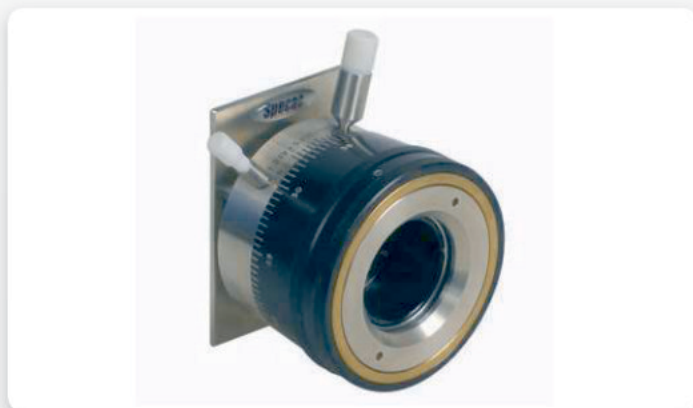


## Variable Pathlength Liquid Cell

For transmission analysis of liquids with adjustment of sample pathlength in situ.



The Variable Pathlength Cell allows for a range of pathlengths to be studied in one cell.

Rotation of the main body alters the pathlength of the cell over a range of 0 mm to 6 mm. The windows do not rotate in relation to the body movement and hence maintain parallelism throughout the pathlength range.

### Features

- Continuous adjustment of sample pathlength
- Micrometer and vernier scales for accurate pathlength setting and readability
- Standard slide mounting
- Non-rotating windows
- Pathlength variation: 0.04 - 6 mm
- Scale division: 5 µm
- Volume at maximum pathlength: 4.5 ml

### Applications

- Liquid analysis without dilution
- Determination of absorption coefficient

### Ordering Information

- GS07500 Variable Pathlength Cell with NaCl nonrotating windows
- GS07501 As 07500, but KBr windows
- GS07502 As 07500, but CaF2 windows
- GS07503 As 07500, but BaF2 windows
- GS07509 As 07500, but Znse windows

#### Replacement Windows for Variable Pathlength Cell

- GS07020 Set of NaCl windows
- GS07021 Set of KBr windows
- GS07022 Set of CaF2 windows
- GS07023 Set of BaF2 windows
- GS07024 Set of CsI windows
- GS07025 Set of CsBr windows
- GS07026 Set of KRS-5 windows
- GS07027 Set of Fused Silica (IR) windows
- GS07028 Set of AgBr windows
- GS07095 Set of Polyethylene windows
- GS07096 Set of ZnSe windows
- GS07097 Set of Si windows

#### Variable Pathlength Cell Spares and Consumables

- GS01110 Luer syringe (2 ml)
- GS07130 Neoprene gaskets for V.P. Cell (10)
- GS07135 Luer plug and reservoir cap for V. P. Cell
- GS07140 Teflon gaskets (0.1 mm) for V. P. Cell (10)
- GS07150 Key for Variable Pathlength

- Illustrations, descriptions and specifications in this data sheet were correct at the time of going to press. However, Specac's policy is one of continuous product development and we reserve the right to change descriptions and specifications at any time. For the latest details please contact your local Specac office or representative.

SPECAC LTD.,  
River House, 97 Cray Ave, St. Mary Cray, Orpington,  
Kent, BR5 4HE UK  
T : +44 (0)1689 873134 F : +44 (0)1689 878527  
E : sales@specac.co.uk Registered in England No. 1008689

SPECAC INC.,  
414 Commerce Drive, #175  
Fort Washington, PA  
19034, U.S.A.  
T : 1 866 726 1126  
E : sales@specac.com